



Crystal Textures

Crystal Textures offer a uniquely differentiated look to unlock unlimited design potential.

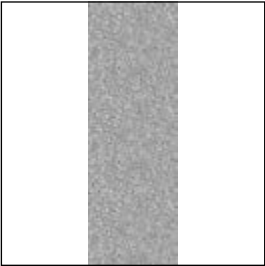
By merging the sparkle and brilliance of crystals into cohesive, harmonious designs, they provide customization flexibility and highly personalized solutions that are perfectly aligned with our clients' needs for design freedom, distinctive applications, and cutting-edge technological innovation.

These versatile products combine Swarovski's elegant crystals with specialized gluing systems, each tailored to specific carrier materials and application arenas. Swarovski Crystal Textures solutions are ideal for use in textiles, interior design, jewelry, packaging, and accessories, inspiring boundless artistic possibilities.

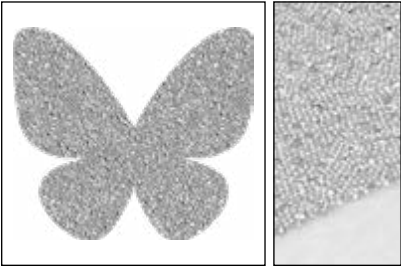
Crystal Texture Product Overview

CRYSTAL FABRIC FAMILY

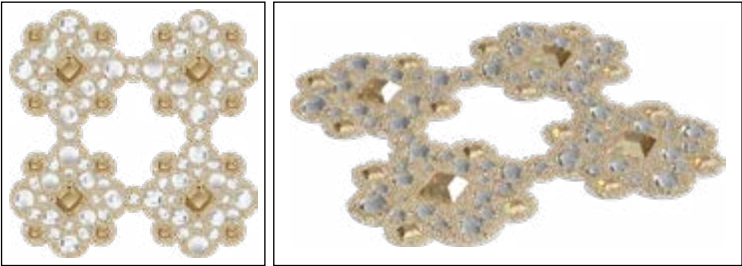
Crystal Fabric Bandings



Crystal Fabric Motifs



CRYSTAL INTARSIA

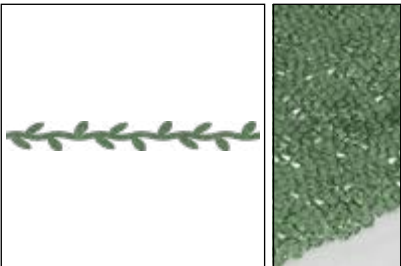


CRYSTAL ROCKS FAMILY

Crystal Rocks



Fine Rocks

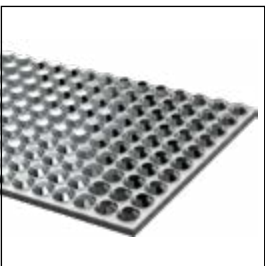


Ultrafine Rocks



CRYSTALTEX CHATON BANDINGS

Straight Line



Honeycomb



Crystal Texture Special Features Overview

GRAPHIC PRINT

Foil Print (FP)



Glass Print (GP)

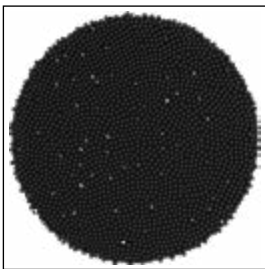


FP + GP

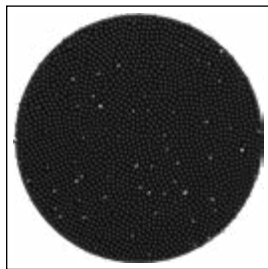


UNLIMITED TECHNOLOGY

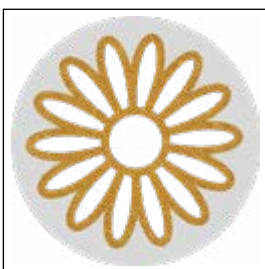
Standard



Unlimited (UL)



FOIL OVERLAY TECHNOLOGY



Crystal Textures

AVAILABLE CRYSTAL TEXTURES PRODUCTS AND FIELDS OF APPLICATION

Crystal textures products offer a **unique, differentiated and new look**, which allows **endless design possibilities**.

Bringing together the sparkle and colors of Swarovski crystals, into integrated harmonic designs they provide **maximum customization flexibility**, and highly personalized solutions that perfectly fit with our client needs in terms of **design freedom, application differentiation and technological advancement**.

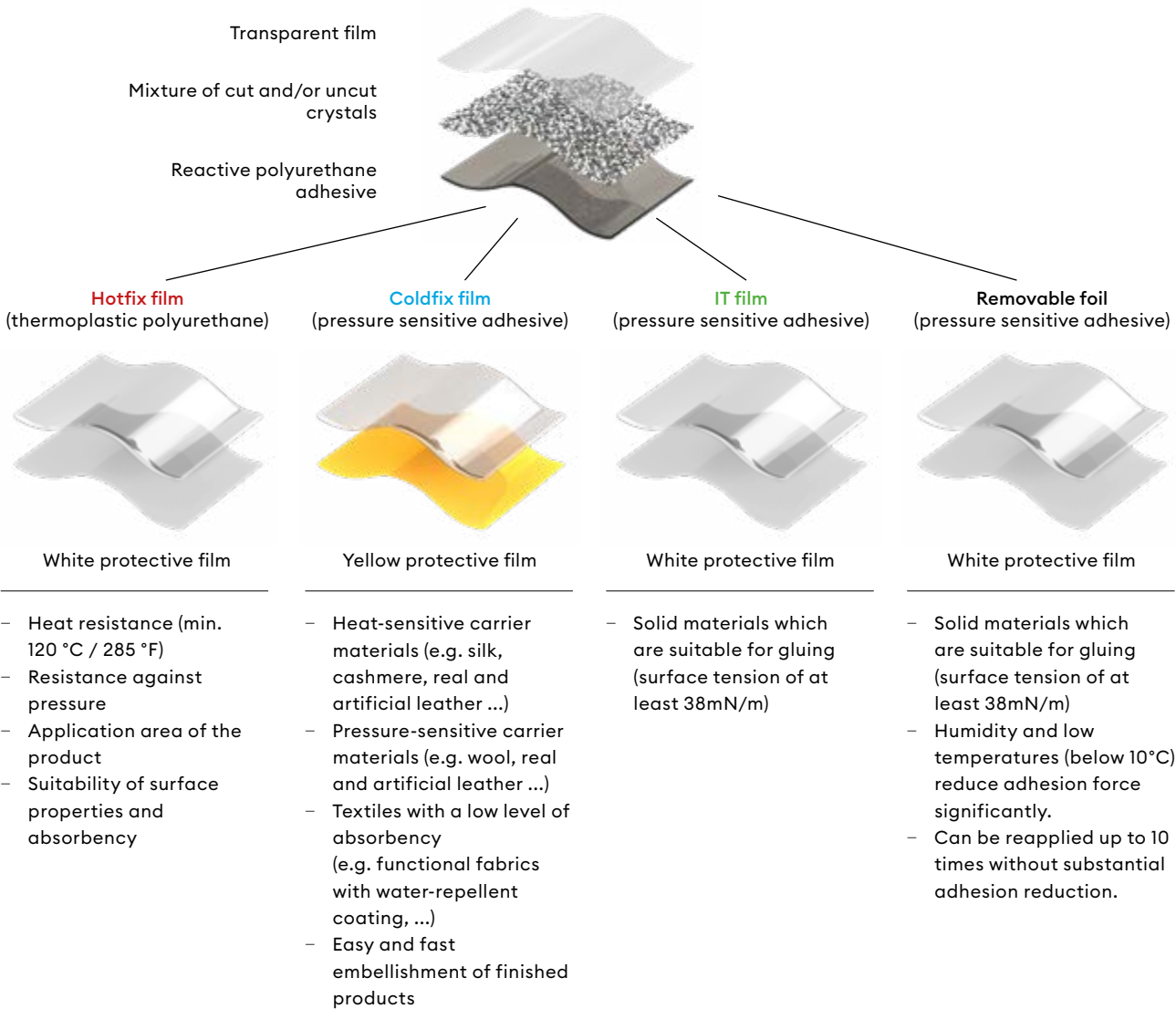
Different adhesive systems, already applied on the reverse side of the product, allow infinite application possibilities, optimized for each carrier material and field of application.

They are ideal for use in apparel and accessories segment, as well as in interior and tech segments.

Due to its outstanding bonding performance, Crystal textures products in **Hotfix** are perfect for a variety of textile applications with high performance requirements. Crystal textures products in **Coldfix** are developed especially for materials that are not suitable for Hotfix applications, such as real and artificial leather and functional fabrics.

Crystal Textures IT on the other hand, are ready to apply and perfect for solid materials such as paper, metal and glass, allowing easy and fast application.

Finally, **Removable foil** products, allow to apply and remove quickly the product onto solid surfaces such as metal, glass, plastic and artificial leather, for an effortless personalization.



Please keep in mind: Coldfix is not a replacement for our Hotfix products – it is a new alternative for difficult carrier materials that are incompatible with Hotfix products.

If Hotfix is applicable, we recommend using Hotfix technique as the achievable bonding strength is higher than applying a Coldfix product.

Before beginning the application process, you should always check whether the carrier material is suitable for application of Self-adhesive Elements.

There are different material checks necessary, depending if you want to apply a Crystal textures product in **Hotfix** or a Crystal texture product in **IT or Removable Foil on a solid material** or a **Coldfix** product onto a textile or leather carrier material.

Nevertheless, please note that there are certain types of plastics used for **solid materials, textile and leather treatments** that are difficult for any gluing connection.

The following table contains a selection of materials that can cause problems for any glue application:

Plastic	Examples	Adhesive Qualities
Polyamide (PA)	Degamid, Nylon, Perlon	very difficult
Polyethylene (PE)	Geberit, Hostalen G, Ferrozell	difficult
Polyethylene Terephthalate (PET)	Cardura, Atlas, Eralyt	difficult
Polyoxymethylene (POM)	Delrin, Kematal, Ertacetal	difficult
Polypropylene (PP)	Moplefan, Proplex, Verelite	difficult
Polytetrafluoroethylene (PTFE)	Teflon®, Gaflon, Ferrotron	very difficult
SILICONE	Silopren, Contiduct, Corotex	very difficult

To increase the bonding strength of a **Coldfix** product or **Removable Foil** product onto leather surfaces, experience shows that in some cases it could be helpful to clean the carrier material with isopropyl alcohol before applying

the **Coldfix** product. We strongly recommend carrying out test to check if the carrier material does not get effected/damaged due to the alcohol.

To ensure the best possible result, test applications on the intended carrier material are strongly recommended. For information especially regarding material limitations please refer to our Application Manual.

Crystal Fabric Family

A ground-breaking innovation, Crystal Fabric features a carrier foil lavishly encrusted with thousands of tiny uncut crystal balls and delicate double-pointed Chatons. The thinnest and lightest crystallization option available, it delivers exceptional flexibility with mesmerizing shine – ideal for delicate fabrics and refined designs. Used for textiles, accessories, jewelry, eyewear, watches, packaging, and interior décor, Crystal Fabric infuses every creation with a luxurious, high-end touch at an accessible price point.

Setting a new standard in sparkle, its appearance transforms dramatically with the carrier's color and finish – ranging from a soft, mysterious gleam on black film to a radiant, luminous shimmer on transparent foil. Every motif can be fully customized – whether to express brand identity, create a captivating design for a special campaign, or embellishing a one-of-a-kind creation.

Crystal Fabric Bandings

- Application: Hotfix or IT (Self-Adhesive)
- Foil Colors: Transparent, Black
- Special Features Available: n.a.
- Segments: Accessories, Apparel, Footwear, Jewelry, Interior Design

ARTICLE EXPLANATION

57 000



C	I010-001 GSHA
W	001, 002, 003, 005, 010, 015
M	10 M ¹ 100%

Crystal Fabric Family

57 000	C	W	M	100%
Article number	Color of crystals	Width of banding	Minimum order quantity in meters (M)	% of actual size

ORDERING EXAMPLE & PRODUCT VARIETY EXPLANATION

57 000	002	I	010	001 GSHA
Article number	3-digit code for width	Type of base material	Color of base material	Color of crystals
	001 1 cm	Hotfix	010 Transparent	Please see the respective product matrix for all available reference codes.
	002 2 cm	I IT (Self-Adhesive)	012 Black	
	003 3 cm			
	005 5 cm			
	010 10 cm			
	015 15 cm			

¹ Please note: the 10-meter packing unit can be delivered in batches (max. three parts with a minimum length of 1 meter for each batch).

Crystal Fabric Motifs

- Application: Hotfix, Coldfix, IT (Self-Adhesive), and Removable Foil (only transparent)
- Foil Colors: Transparent, Black
- Special Features Available: Graphics, Foil Overlay, Unlimited
- Segments: Accessories, Apparel, Footwear, Jewelry, Interior Design, Packaging

ARTICLE EXPLANATION

631 370



C	C010-001GSHA
S	~45x45
M	102 PCS
	100%

631 370	C	S	M	100%
Article number	Color of crystals	Motif size in mm	Minimum order quantity in pieces (PCS)	% of actual size

ORDERING EXAMPLE & PRODUCT VARIETY EXPLANATION

631 370	C	010	001 GSHA
Article number	Type of base material	Color of base material	Color of crystals Please see the respective product matrix for all available reference codes.
	Hotfix	010 Transparent	
	C Coldfix	012 Black	
	I IT (Self-Adhesive)		
	R Removable foil		

AVAILABLE BASE MATERIALS AND CRYSTAL COLORS & EFFECTS

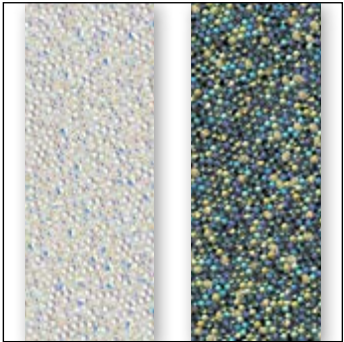
Crystal Fabric Family	<div>57 000 Bandings</div> <div>57 392 Customized Motif Number</div>		Crystal Fabric Bandings	Width in cm	001	002	003	005	010	015	Color of Film	010 Transparent (HF; IT)	012 Black (HF; IT)	Crystal Fabric Motifs	Color of Film	010 Transparent (HF; CF*; IT; RM*)	012 Black (HF; CF*; IT)
	Crystal Effects																
	Transparent Effects																
	<div> Crystal Aurore Boreale (001 AB)</div>				■	■	■	■	■	■		■	■			■	■
	<div> Crystal Antique Pink (001 ANTP)</div>				■	■	■	■	■	■		■				■	
	<div> Crystal Golden Shadow (001 GSHA)</div>				■	■	■	■	■	■		■	■			■	■
	<div> Crystal Heliotrope (001 HEL)</div>				■	■	■	■	■	■		■	■			■	■
	<div> Crystal Moonlight (001 MOL)</div>				■	■	■	■	■	■		■	■			■	■
	<div> Crystal Paradise Shine (001 PARSH)</div>				■	■	■	■	■	■		■	■			■	■
	Metallic Effects																
	<div> Crystal Chrome (001 CHRM)</div>				■	■	■	■	■	■		■	■			■	■
	<div> Crystal Comet Argent Light (001 CAL)</div>				■	■	■	■	■	■		■	■			■	■
	<div> Crystal Metallic Light Gold (001 MLGLD)</div>				■	■	■	■	■	■		■	■			■	■
	<div> Crystal Metallic Sunshine (001 METSH)**</div>				■	■	■	■	■	■		■	■			■	■
	Color Effects																
	Metallic Effects																
	<div> Jet Hematite (280 HEM)</div>				■	■	■	■	■	■			■				■
	Multicolors																
	<div> Crystal & Crystal Moonlight (001 M500)</div>				■	■	■	■	■	■		■	■			■	■

* Coldfix and Removable foil only available for motifs

** Crystal Metallic Sunshine (001 METSH) is not suitable for swimwear because effect 001 METSH is highly sensitive to seawater, sweat, and chlorine.

OVERVIEW OF AVAILABLE COLORS & EFFECTS

Crystal Aurore Boreale (001 AB)



010 Transparent 012 Black

Crystal Antique Pink (001 ANTP)



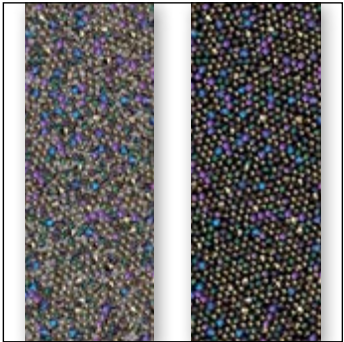
010 Transparent

Crystal Golden Shadow (001 GSHA)



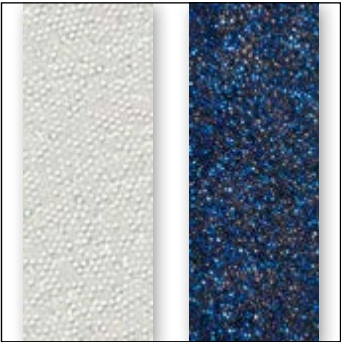
010 Transparent 012 Black

Crystal Heliotrope (001 HEL)



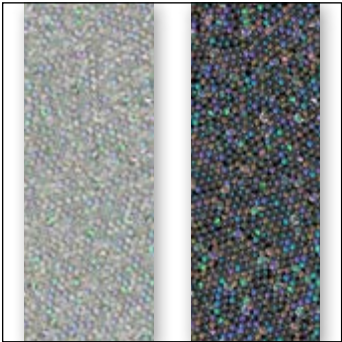
010 Transparent 012 Black

Crystal Moonlight (001 MOL)



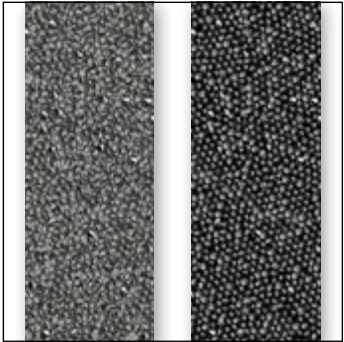
010 Transparent 012 Black

Crystal Paradise Shine (001 PARSH)



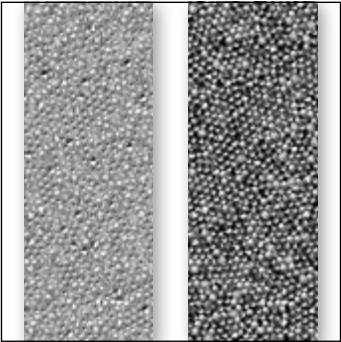
010 Transparent 012 Black

Crystal Chrome (001 CHRM)



010 Transparent 012 Black

Crystal Comet Argent Light (001 CAL)



010 Transparent 012 Black

Crystal Metallic Light Gold (001 MGLD)



010 Transparent 012 Black



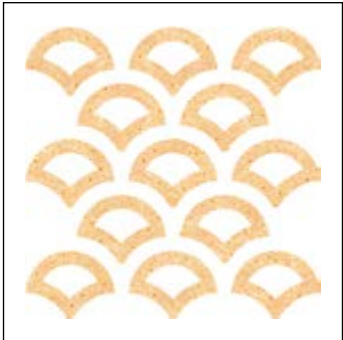
INSPIRATIONAL MOTIFS

57 392



C C012-001MOL
S ~30x30
M 300 PCS 100%

57 412



C 010-001METSH
S ~65x64
M 52 PCS 60%

57 440



C 012-001MIGLD
S ~37x37
M 140 PCS 100%

57 441



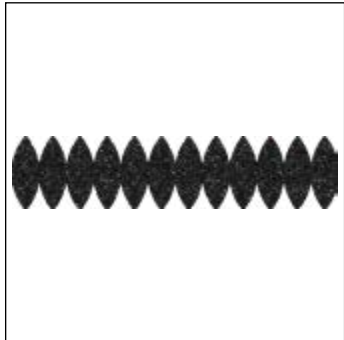
C 010-001ANTP
S ~128x32
M 56 PCS 33%

57 442



C 012-001CAL
S ~124x56
M 35 PCS 33%

57 443



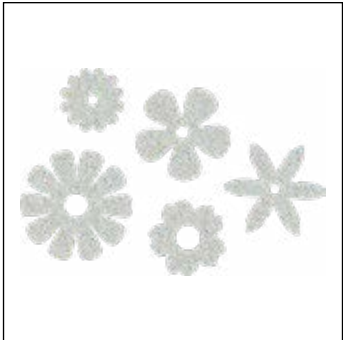
C 012-280HEM
S ~98x22
M 90 PCS 44%

57 444



C 012-001AB
S ~45x40
M 114 PCS 90%

57 445



C 010-001AB
S ~90x61
M 50 PCS 45%

57 446



C 010-001GSHA
S ~57x67
M 64 PCS 60%

Please note: all motifs are available in certain color/film variations (see color matrix).

TECHNICAL PRODUCT INFORMATION

Crystal Fabric Family

	Crystal Fabric Motifs	Crystal Fabric Bandings
Min. motif size	(10x10 mm) or 1.0 cm ²	n.a.
Max. motif size	980x330 mm Standard 400x330 mm (Graphics, UL, FO)	n.a.
Min. product width	3 mm	n.a.
Min. width of holes within motif	3 mm	n.a.
Min. distance between 2 motifs	3 mm	n.a.
Rounding Radius (edges & angles less than =/< 90° need to be rounded off)	0.75 mm	n.a.
Max. amount of different colors/sizes of Crystals	1 Crystal Fabric Mixture Color + 1 Carrier Foil Color	1 Crystal Fabric Mixture Color + 1 Carrier Foil Color
Min. motif size for Foil Overlay Feature	(10x10 mm) or 1.0 cm ²	n.a.
Foil Overlay min./max. width outside	min. 3 mm / max. 50 mm	n.a.
Foil Overlay inside (between crystal-covered surfaces)	min. 3 mm / max. 50 mm	n.a.
Foil Overlay min. surface	0.3 cm ² (3x10 mm)	n.a.
Foil Overlay outer contour	without restriction / however: corners ≤ 90° must be rounded with 1 mm	n.a.
Tolerances - outer contour	+ 2.2 mm	+ 2.2 mm
Product Height	1.00 mm +/-0.30 mm	1.00 mm +/-0.30 mm
Packing Unit	1 sheet	10 m
Minimum Order QTY	1 sheet ¹	10 m
Sample QTY	≤ 1sheet ²	n.a.

¹ For Graphics the MOQ is 3 sheets.

² 20% Price Markup on sample orders <1 sheet.

CS needs to implement markup and note "Low MOQ Sample" when placing the order.

For more detailed product insights, please refer to the product information sheets. If detailed specifications regarding product tolerances (e.g. cavity dimensions for metal components or printing tolerances) are required, please contact your local Swarovski sales office. They will initiate an application request within our internal database to ensure your requirements are thoroughly addressed.

Crystal Intarsia

Crystal Intarsia brings a striking new dimension to Swarovski's Crystal Textures by merging the brilliance of Crystal Fabric with the precision of Flat Backs to create sensational 3D effects. This innovative combination delivers radiant tactility and modern appeal, offering a fresh way to add depth, brilliance, and cultural storytelling to creative designs.

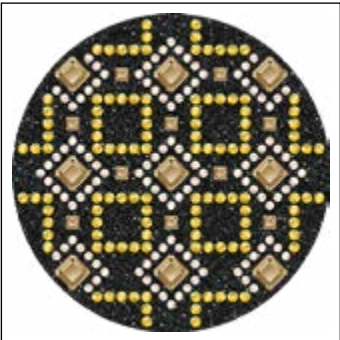
Celebrating craftsmanship, heritage, and creativity, Crystal Intarsia is perfect for fashioning unique motifs and eclectic designs that resonate with a modern, global aesthetic. Every motif can be fully customized – whether to express brand identity, create a captivating design for a special campaign, or embellishing a one-of-a-kind creation.

Crystal Intarsia

- Application: Hotfix, Coldfix, IT (Self-Adhesive), and Removable Foil (only transparent)
- Foil Colors: Transparent, Black
- Special Features Available: Graphics (only Foil Print), Foil Overlay, Unlimited
- Segments: Accessories, Apparel, Footwear, Jewelry, Interior Design, Packaging

ARTICLE EXPLANATION

412 244



C	012-280HEM/391/001METSH/ 001GSHA/001GSHA
E	S6/S8/2400MM6/2400MM3
S	~70x70
M	20 PCS 60%

412 244	C	E	S	M	60%
Article number	Color of crystals	Elements For details of stone sizes and element codes, please refer to the color and product charts in the next pages of this chapter.	Motif size in mm	Minimum order quantity in pieces (PCS)	% of actual size

ORDERING EXAMPLE & PRODUCT VARIETY EXPLANATION

412 244	012		280 HEM
Article number	Type of base material	Color of base material	Color of crystals
	Hotfix	010 Transparent	Please see the respective product matrix for all available reference codes.
C	Coldfix	012 Black	
I	IT (Self-Adhesive)		
R	Removable foil		

CRYSTAL FABRIC FOR INTARSIA

412 244

Customized Motif Number

Color of Film

010 Transparent (HF; CF; IT; RM)

012 Black (HF; CF; IT)

Crystal Effects

Transparent Effects

Crystal Aurore Boreale (001 AB)

Crystal Antique Pink (001 ANTP)

Crystal Golden Shadow (001 GSHA)

Crystal Heliotrope (001 HEL)

Crystal Moonlight (001 MOL)

Crystal Paradise Shine (001 PARSH)

Metallic Effects

Crystal Chrome (001 CHRM)

Crystal Comet Argent Light (001 CAL)

Crystal Metallic Light Gold (001 MLGLD)

Crystal Metallic Sunshine (001 METSH)

Color Effects

Metallic Effects

Jet Hematite (280 HEM)

Multicolors

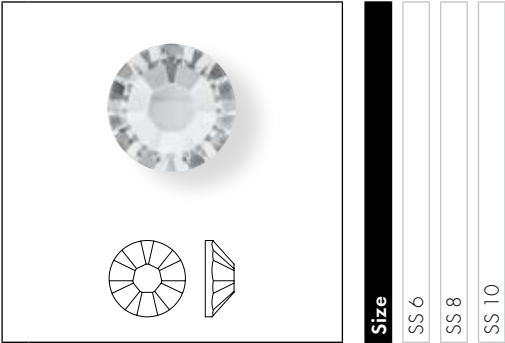
Crystal &

Crystal Moonlight (001 M500)

Crystal Intarsia is only available for motifs.
Crystal Intarsia is not suitable for swimwear because it is highly sensitive to seawater, sweat, and chlorine.

CRYSTAL FLAT BACKS FOR INTARSIA

2038 XILLION Rose



Size

SS 6

SS 8

SS 10

Crystal

Crystal M PRIM (001)

Colors

Plain Colors

Amethyst M PRIM (204)

Aquamarine M PRIM (202)

Black Diamond M PRIM (215)

Denim Blue M PRIM (266)

Emerald M PRIM (205)

Erinite M PRIM (360)

Fuchsia M PRIM (502)

Indian Siam M PRIM (327)

Jet (280)

Jonquil M PRIM (213)

Light Amethyst M PRIM (212)

Light Peach M PRIM (362)

Light Rose M PRIM (223)

Light Sapphire M PRIM (211)

Light Siam M PRIM (227)

Light Silk M PRIM (261)

Light Turquoise M PRIM (263)

Majestic Blue M PRIM (296)



2038

Size

SS 6

SS 8

SS 10

Montana M PRIM (207)

Peridot M PRIM (214)

Rose M PRIM (209)

Ruby M PRIM (501)

Sapphire M PRIM (206)

Scarlet M PRIM (276)

Siam M PRIM (208)

Silk M PRIM (391)

Tanzanite M PRIM (539)

Vintage Rose M PRIM (319)

Crystal Effects

Transparent Effects

Crystal Aurore Boreale M PRIM (001 AB)

Crystal Golden Shadow M PRIM (001 GSHA)

Crystal Metallic Sunshine M PRIM (001 METSH)

Crystal Moonlight M PRIM (001 MOL)

Crystal Silver Night M PRIM (001 SINI)

Crystal Silver Shade M PRIM (001 SSHA)

Color Effects

Metallic Effects





































Jet Hematite(280 HEM)

Crystal Intarsia

Crystal Intarsia is not suitable for swimwear because it is highly sensitive to seawater, sweat, and chlorine.

2078 XIRIUS Rose

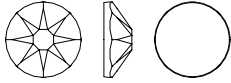

<div></div>							
		Size	SS 12	SS 16	SS 20	SS 30	SS 34
Crystal							
Crystal M PRIM (001)							
Colors							
Plain Colors							
Amethyst M PRIM (204)							
Aquamarine M PRIM (202)							
Black Diamond M PRIM (215)							
Denim Blue M PRIM (266)							
Emerald M PRIM (205)							
Erinite M PRIM (360)							
Fuchsia M PRIM (502)							
Indian Siam M PRIM (327)							
Jet (280)							
Jonquil M PRIM (213)							
Light Amethyst M PRIM (212)							
Light Peach M PRIM (362)							
Light Rose M PRIM (223)							
Light Sapphire M PRIM (211)							
Light Siam M PRIM (227)							
Light Silk M PRIM (261)							
Light Turquoise M PRIM (263)							
Majestic Blue M PRIM (296)							
Montana M PRIM (207)							
Peridot M PRIM (214)							
Rose M PRIM (209)							
Ruby M PRIM (501)							
Sapphire M PRIM (206)							
Scarlet M PRIM (276)							
Siam M PRIM (208)							
Silk M PRIM (391)							
Tanzanite M PRIM (539)							
Vintage Rose M PRIM (319)							








2078							
		Size	SS 12	SS 16	SS 20	SS 30	SS 34
Crystal Effects							
Transparent Effects							
	Crystal Aurore Boreale M PRIM (001 AB)						
	Crystal Golden Shadow M PRIM (001 GSHA)						
	Crystal Metallic Sunshine M PRIM (001 METSH)						
	Crystal Moonlight M PRIM (001 MOL)						
	Crystal Silver Night M PRIM (001 SINII)						
	Crystal Silver Shade M PRIM (001 SSHA)						
Color Effects							
Metallic Effects							
	Jet Hematite (280 HEM)						

Crystal Intarsia is not suitable for swimwear because it is highly sensitive to seawater, sweat, and chlorine.

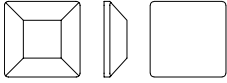

Crystal Intarsia




2088 XIRIUS Rose



Size	SS 12	SS 16	SS 20
Crystal Effects			
Crystal Lacquer ^{PRO} Effects			
Crystal Electric Lacquer ^{PRO} Ignite Effects			
 Crystal Electric Blue Ignite (001 L134I)	<input checked="" type="checkbox"/>	<input checked="" type="checkbox"/>	<input checked="" type="checkbox"/>
 Crystal Electric Green Ignite (001 L135I)	<input checked="" type="checkbox"/>	<input checked="" type="checkbox"/>	<input checked="" type="checkbox"/>
 Crystal Electric Orange Ignite (001 L136I)	<input checked="" type="checkbox"/>	<input checked="" type="checkbox"/>	<input checked="" type="checkbox"/>
 Crystal Electric Pink Ignite (001 L137I)	<input checked="" type="checkbox"/>	<input checked="" type="checkbox"/>	<input checked="" type="checkbox"/>
 Crystal Electric Violet Ignite (001 L148I)	<input checked="" type="checkbox"/>	<input checked="" type="checkbox"/>	<input checked="" type="checkbox"/>
 Crystal Electric White Ignite (001 L139I)	<input checked="" type="checkbox"/>	<input checked="" type="checkbox"/>	<input checked="" type="checkbox"/>
 Crystal Electric Yellow Ignite (001 L138I)	<input checked="" type="checkbox"/>	<input checked="" type="checkbox"/>	<input checked="" type="checkbox"/>

2400 Square Flat Back

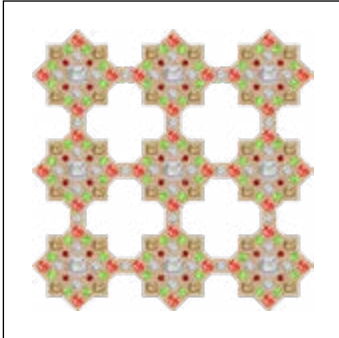


Size	3 mm	4 mm	6 mm
Crystal			
 Crystal M PRIM (001)	<input checked="" type="checkbox"/>	<input checked="" type="checkbox"/>	<input checked="" type="checkbox"/>
Colors			
Plain Colors			
 Jet (280)	<input checked="" type="checkbox"/>	<input checked="" type="checkbox"/>	<input checked="" type="checkbox"/>
Crystal Effects			
Transparent Effects			
 Crystal Golden Shadow M PRIM (001 GSHA)	<input checked="" type="checkbox"/>	<input checked="" type="checkbox"/>	<input checked="" type="checkbox"/>

Crystal Intarsia is not suitable for swimwear because it is highly sensitive to seawater, sweat, and chlorine.

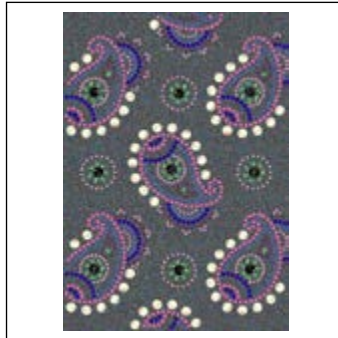
INSPIRATIONAL MOTIFS

84 057



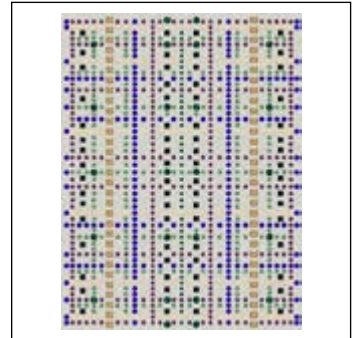
C 010-001METSH/327/214/
001I136I/001/001/001GSHA
E S6/S10/S16/2400MM6/
2400MM3/2400MM4
S ~93x93
M 12 PCS **40%**

84 058



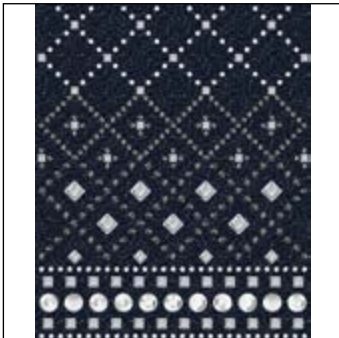
C 012-001PARSH/212/206/204/
209/296/360/001AB/280
E S6/S6/S6/S10/S10/S16/S30/
S30
S ~148x210
M 2 PCS **20%**

84 059



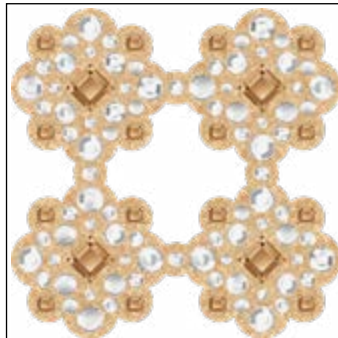
C 010-001MOL/205/204/360/
001GSHA/296/205/280/
001GSHA
E S6/S8/S8/S8/S10/S16/
2400MM3/2400MM4
S ~133x175
M 4 PCS **24%**

411 792



C 012-280HEM/001/215/001SINI/
001/001/001/001
E S6/S6/S10/S34/2400MM6/
2400MM3/2400MM4
S ~104x127
M 9 PCS **35%**

411 793



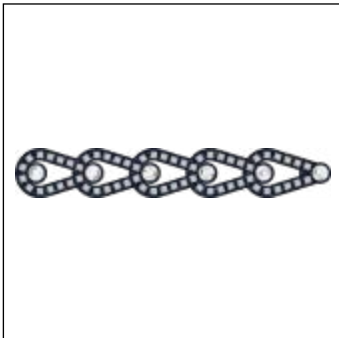
C 010-001GSHA/001/001/001/
001/001GSHA/001GSHA
E S6/S10/S16/S20/2400MM6/
2400MM3
S ~58x58
M 30 PCS **75%**

411 796



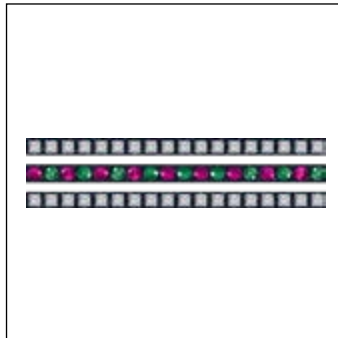
C 012-280HEM/001METSH/202/
502/205/001/001GSHA/280
E S16/S20/S34/S34/2400MM6/
2400MM3/2400MM4
S ~31x37
M 64 PCS **100%**

411 800



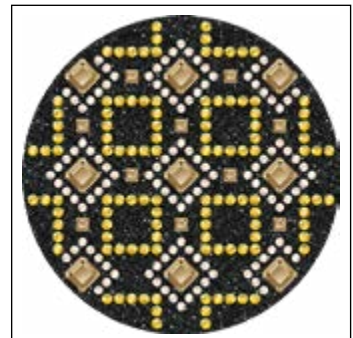
C 012-280HEM/001/001
E S34/2400MM3
S ~139x22
M 24 PCS **30%**

411 952



C 012-280HEM/502/360/001
E S20/S20/2400MM4
S ~99x23
M 36 PCS **40%**

412 244



C 012-280HEM/391/001METSH/
001GSHA/001GSHA
E S6/S8/2400MM6/2400MM3
S ~70x70
M 20 PCS **60%**

TECHNICAL PRODUCT INFORMATION

Crystal Intarsia

Crystal Intarsia	
Min. motif size	(10x10 mm) 1.0 cm ²
Max. motif size	400x330 mm
Min. product width	3 mm
Min. width of holes within motif	3 mm
Min. distance between 2 motifs	3 mm
Rounding Radius (edges & angles less than $\geq 90^\circ$ need to be rounded off)	0.75 mm
Max. amount of different colors/sizes of Crystals	9 different Flatback elements + 1 Crystal Fabric Mixture Color + 1 Carrier Foil Color"
Min. motif size for Foil Overlay Feature	(10x10 mm) or 1.0 cm ²
Foil Overlay min./max. width outside	min. 3 mm / max. 50 mm
Foil Overlay inside (between crystal-covered surfaces)	min. 3 mm / max. 50 mm
Foil Overlay min. surface	0.3 cm ² (3x10 mm)
Foil Overlay outer contour	without restriction / however: corners $\leq 90^\circ$ must be rounded with 1 mm
Tolerances - outer contour	+ 2.2 mm
Product Height	Fabric: 1.00 mm +/- 0.30 mm 2038 SS6: 0.65 mm + up to 0.3 mm 2078 SS34: 2.50 mm + up to 0.3 mm
Packing Unit	1 sheet
Minimum Order QTY	1 sheet ¹
Sample QTY	≤ 1 sheet ²

¹ For Graphics the MOQ is 3 sheets.

² 20% Price Markup on sample orders ≤ 1 sheet.

CS needs to implement markup and note "Low MOQ Sample" when placing the order.

For more detailed product insights, please refer to the product information sheets. If detailed specifications regarding product tolerances (e.g. cavity dimensions for metal components or printing tolerances) are required, please contact your local Swarovski sales office. They will initiate an application request within our internal database to ensure your requirements are thoroughly addressed.

Crystal Rocks Family

Engineered exclusively with full-faceted, double-pointed Chatons to achieve an unparalleled level of brilliance, the Crystal Rocks Family represents one of Swarovski's most opulent embellishment solutions to date.

This richly encrusted crystal surface is offered in three variations (Crystal Rocks, Crystal Fine Rocks and Crystal Ultrafine Rocks), providing flawless versatility for every creative vision – from bold, dramatic statements to delicate details. Its extravagant and exceptional density allows each piece to reflect light with entrancing intensity.

With their smooth surfaces and refined edges, Crystal Rocks ensure seamless application across a wide range of segments, including high-end jewelry, accessories, innovative textiles, packaging, and interior design. Every motif can be fully customized – whether to express brand identity, create a captivating design for a special campaign, or embellishing a one-of-a-kind creation.

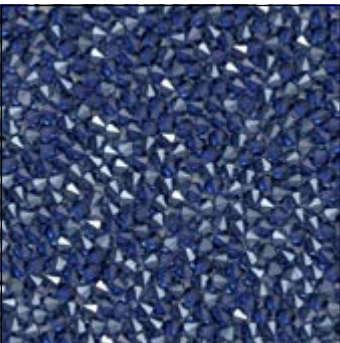
Crystal Rocks Family

- Application: Hotfix, Coldfix, IT (Self-Adhesive), and Removable Foil (only transparent)
- Foil Colors: Transparent, Black
- Special Features Available: Graphics, Foil Overlay
- Segments: Accessories, Apparel, Footwear, Jewelry, Interior Design, Packaging

ARTICLE EXPLANATION

Crystal Rocks

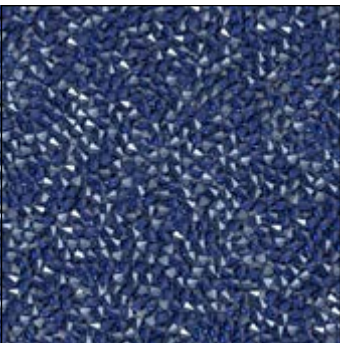
351 975



C	010 1404 NIFA
S	~45x45
M	42 PCS
	100%

Crystal Fine Rocks

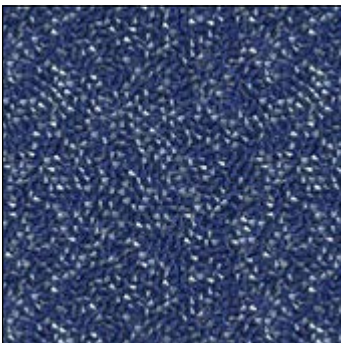
719 619



C	010 1404 NIFA
S	~45x45
M	42 PCS
	100%

Crystal Ultrafine Rocks

832 691



C	010 1404 NIFA
S	~45x45
M	42 PCS
	100%

Crystal Rocks Family

351 975				
719 619				
832 691	C	S	M	100%
Article number	Color of crystals	Motif size in mm	Minimum order quantity in pieces (PCS)	% of actual size

ORDERING EXAMPLE & PRODUCT VARIETY EXPLANATION

351 975			
719 619			
832 691		010	1404 NIFA
Article number	Type of base material	Color of base material	Color of crystals
	Hotfix	010 Transparent	
C	Coldfix	012 Black	Please see the respective product matrix for all available reference codes.
I	IT (Self-Adhesive)		
R	Removable foil		

AVAILABLE BASE MATERIALS AND CRYSTAL COLORS & EFFECTS

72 058
74 117
89 970
Customized Motif Number

Color of Film

010 Transparent (HF; CF; IT; RM)

012 Black (HF; CF; IT)

Crystal

Crystal (001)

Color

Plain Color

Erinite (360)

Fuchsia (502)

Jet (280)

Light Siam (227)

Sunflower (292)

Vintage Rose (319)

Swarovski ReCreated™ Colors

ReCreated™ Dark Sapphire Nightfall (1404 NIFA)

ReCreated™ Light Smoked Topaz (1402)

ReCreated™ Smoked Topaz (1403)

Crystal Effects

Transparent Effects

Crystal Aurore Boreale (001 AB)

Crystal Bermuda Blue (001 BBL)

Crystal Golden Shadow (001 GSHA)

Crystal Heliotrope (001 HEL)

Crystal Metallic Light Gold (001 MLGLD)

Crystal Metallic Sunshine (001 METSH)*

Crystal Moonlight (001 MOL)

Crystal Paradise Shine (001 PARSH)

Crystal Shimmer (001 971)

Crystal Silver Shade (001 SSHA)

72 058
74 117
89 970
Customized Motif Number

Color of Film

010 Transparent (HF; CF; IT; RM)

012 Black (HF; CF; IT)

Metallic Effects

Crystal Chrome (001 CHRM)

Crystal Comet Argent Light (001 CAL)

Crystal Metallic Silver (001 METSI)

Color Effects

Transparent Effects

Light Siam Shimmer (227 971)

Multicolors

Jet &
Crystal Metallic Silver (001 M100)

Jet &
Crystal Comet Argent light (001 M106)

Crystal &
Crystal Moonlight (001 M126)

* Crystal Metallic Sunshine (001 METSH) is not suitable for swimwear because effect 001 METSH is highly sensitive to seawater, sweat, and chlorine. Please note: Crystal Comet Argent Light (001 CAL) is not suitable for swimwear because effect 001 CAL is highly sensitive to seawater, sweat, and chlorine.

Crystal Fine Rocks Colorful Mixtures

Crystal Rocks Family

74 116
Customized Motif Number

Color of Film

010 Transparent (HF; CF; IT; RM)

012 Black (HF; CF; IT)

Multicolors

Carribean Blue (202 M155)

Deep Blue (255 M156)

Mystic Gold (319 M148)

Metallic Glow (319 M158)

Peacock (360 M150)

Disco Fever (227 M146)

Starry Night (280 M164)

Golden Spring (360 M151)

Harlequin (360 M161)

Harlequin Light (360 M162)

Silver Lights (360 M163)

302

OVERVIEW OF AVAILABLE COLORS & EFFECTS FOR THE CRYSTAL ROCKS FAMILY*



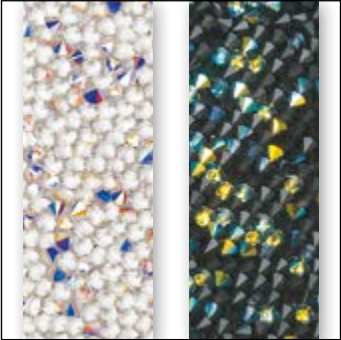
* Color illustrations in Crystal Rocks representative of all Crystal Rocks variants

Swarovski ReCreated™ Smoked Topaz (1403)



010 Transparent 012 Black

Crystal Aurore Boreale (001 AB)



010 Transparent 012 Black

Crystal Bermuda Blue (001 BBL)



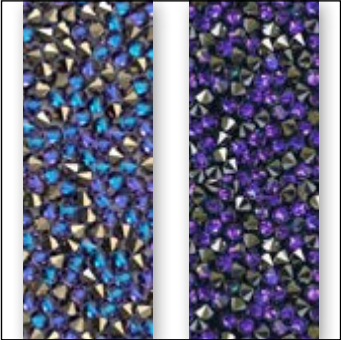
012 Black

Crystal Golden Shadow (001 GSHA)



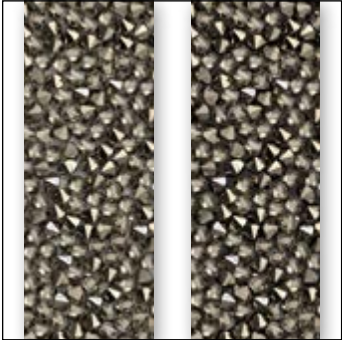
010 Transparent

Crystal Heliotrope (001 HEL)



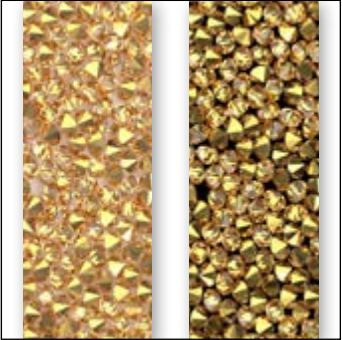
010 Transparent 012 Black

Crystal Metallic Light Gold (001 MLGLD)



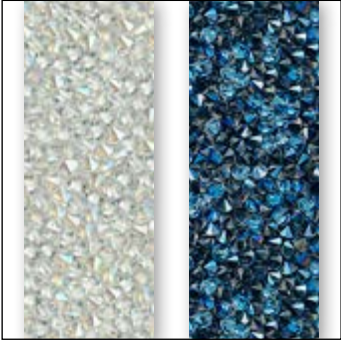
010 Transparent 012 Black

Crystal Metallic Sunshine (001 METSH)



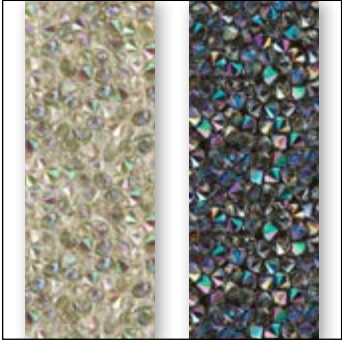
010 Transparent 012 Black

Crystal Moonlight (001 MOL)



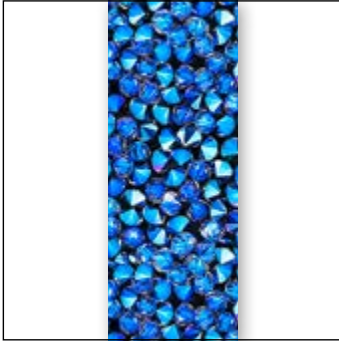
010 Transparent 012 Black

Crystal Paradise Shine (001 PARSH)



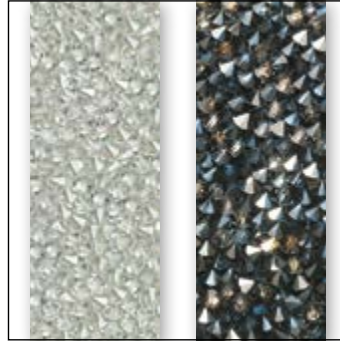
010 Transparent 012 Black

Crystal Shimmer (001 971)



012 Black

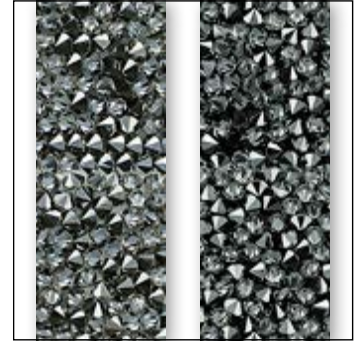
Crystal Silver Shade (001 SSHA)



010 Transparent

012 Black

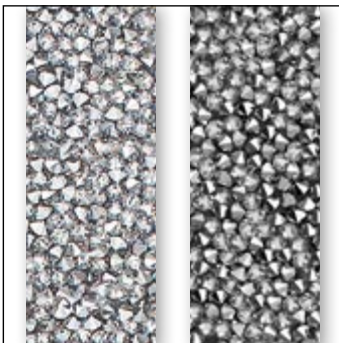
Crystal Chrome (001 CHRM)



010 Transparent

012 Black

Crystal Comet Argent Light (001 CAL)



010 Transparent

012 Black

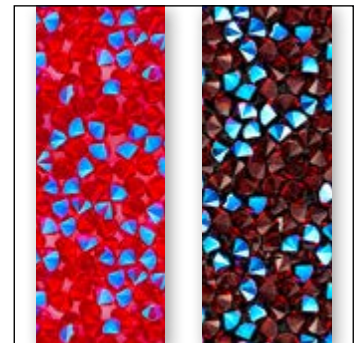
Crystal Metallic Silver (001 METSI)



010 Transparent

012 Black

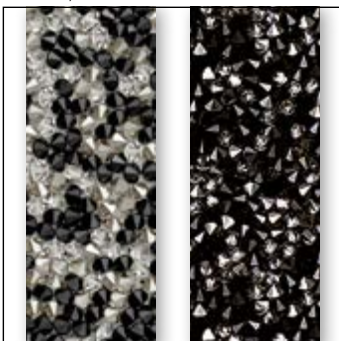
Light Siam Shimmer (227 971)



010 Transparent

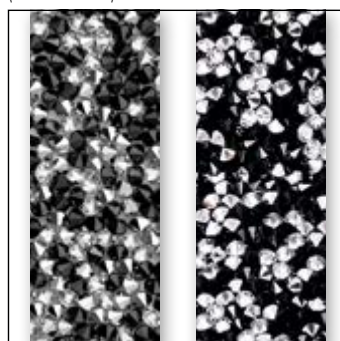
012 Black

Jet & Crystal Metallic Silver (001 M100)



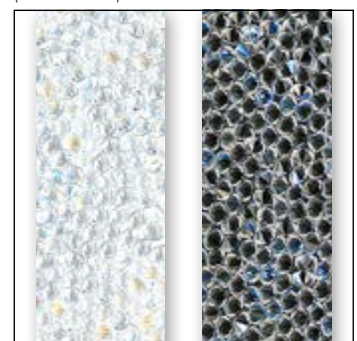
010 Transparent

012 Black

Jet & Crystal Comet Argent Light
(001 M106)

010 Transparent

012 Black

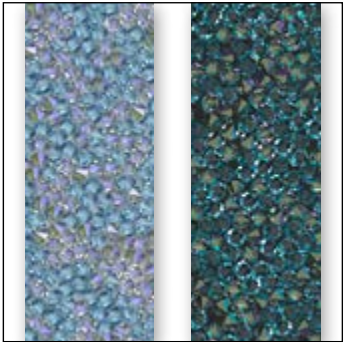
Crystal & Crystal Moonlight
(001 M126)

010 Transparent

012 Black

Crystal Fine Rocks Colorful Mixtures

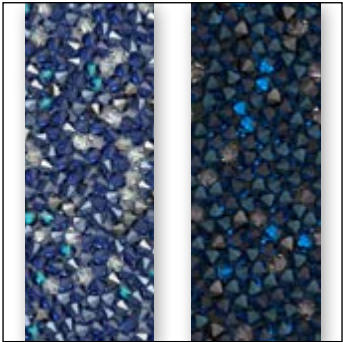
Carribean Blue (202 M155)



010 Transparent

012 Black

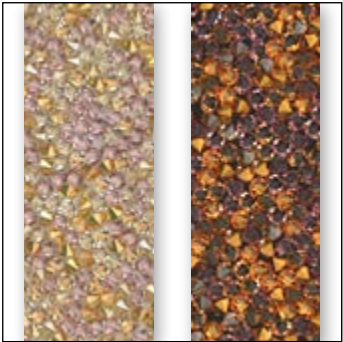
Deep Blue (255 M156)



010 Transparent

012 Black

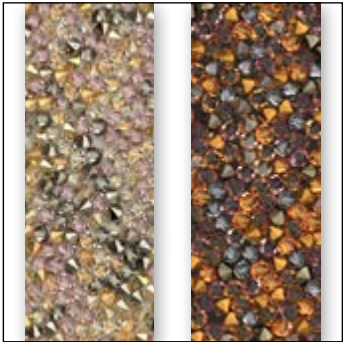
Mystic Gold (319 M148)



010 Transparent

012 Black

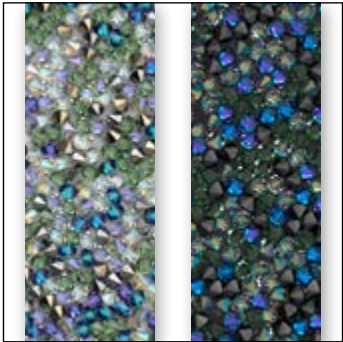
Metallic Glow (319 M158)



010 Transparent

012 Black

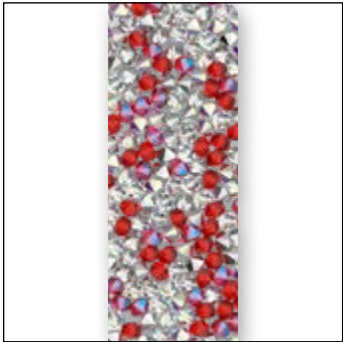
Peacock (360 M150)



010 Transparent

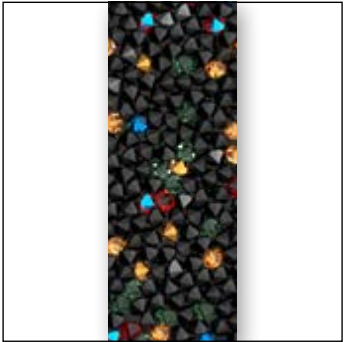
012 Black

Disco Fever (227 M146)



010 Transparent

Starry Night (280 M164)



012 Black

Golden Spring (360 M151)



010 Transparent

Harlequin (360 M161)



010 Transparent

Crystal Rocks Family

Harlequin Light (360 M162)



010 Transparent

Silver Lights (360 M163)



012 Black

INSPIRATIONAL MOTIFS

Crystal Rocks

72 058



C 010-001MIGLD
S ~168x168
M 2 PCS 25%

72 068



C 010-1402
S ~64x64
M 30 PCS 65%

72 069

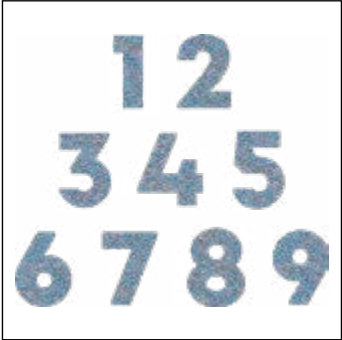


C 010-001CAL
S ~139x152
M 6 PCS 28%

Crystal Rocks Family Inspirational Motifs

Crystal Fine Rocks

74 116



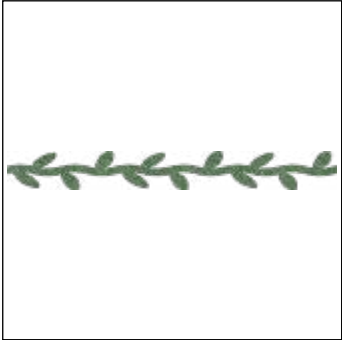
C 010-202M155
S ~118x103
M 9 PCS 35%

74 117



C 010-227
S ~90x59
M 18 PCS 45%

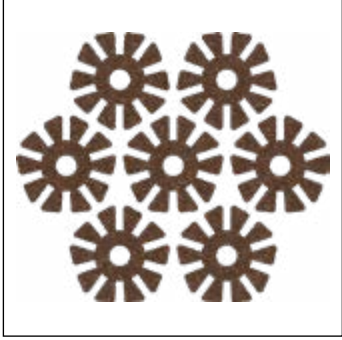
74 118



C 010-360
S ~173x20
M 22 PCS 25%

Crystal Ultrafine Rocks

89 970



C 010-1403
S ~138x118
M 6 PCS 30%

89 971



C 012-001METSH
S ~44x51
M 48 PCS 85%

89 972



C 012-1404NIFA
S ~39x38
M 56 PCS 100%

Please note: all motifs are available in certain color/film variations (see color matrix).

TECHNICAL PRODUCT INFORMATION

	Crystal Ultrafine Rocks	Crystal Fine Rocks	Crystal Rocks
Min. motif size	(8x8 mm) or 0.64 cm ²	(10x10 mm) or 1.00 cm ²	(15x15 mm) or 2.25 cm ²
Max. motif size	400x330 mm		
Min. product width	3.4 mm	4 mm	9 mm
Min. width of holes within motif	3 mm		
Min. distance between 2 motifs	3 mm		
Rounding Radius (edges & angles less than $\geq 90^\circ$ need to be rounded off)	1 mm	1.35 mm	1.5 mm
Max. amount of different colors/sizes of Crystals	1 Crystal Ultrafine Rocks Color + 1 Carrier Foil Color	1 Crystal Fine Rocks Color + 1 Carrier Foil Color	1 Crystal Rocks Color + 1 Carrier Foil Color
Min. motif size for Foil Overlay Feature	(15x15 mm) or 2.25 cm ²		
Foil Overlay min./max. width outside	min. 3 mm / max. 50 mm		
Foil Overlay inside (between crystal-covered surfaces)	min. 3 mm / max. 50 mm		
Foil Overlay min. surface	0.45 cm ² (3x15 mm)		
Foil Overlay outer contour	without restriction / however: corners $\leq 90^\circ$ must be rounded with 1 mm		
Tolerances - outer contour	+/- 0.4 mm	+/- 0.6 mm	+/- 0.8 mm
Product Height	1.40 +/- 0.20 mm	1.85 +/- 0.25 mm	2.40 +/- 0.30 mm
Packing Unit	1 sheet		
Minimum Order QTY	1 sheet ¹		
Sample QTY	≤ 1 sheet ²		

¹ For Graphics the MOQ is 3 sheets.

² 20% Price Markup on sample orders <1 sheet.

CS needs to implement markup and note "Low MOQ Sample" when placing the order.

For more detailed product insights, please refer to the product information sheets. If detailed specifications regarding product tolerances (e.g. cavity dimensions for metal components or printing tolerances) are required, please contact your local Swarovski sales office. They will initiate an application request within our internal database to ensure your requirements are thoroughly addressed.

Crystaltex Chaton Bandings

Crystaltex Chaton Bandings bring a luxurious, eye-catching sparkle to the world of design. Composed of rows of small XILION Chatons arranged in regular or honeycomb patterns on a transparent or black Crystal Textures base, they deliver a unique look that is at once polished and powerful.

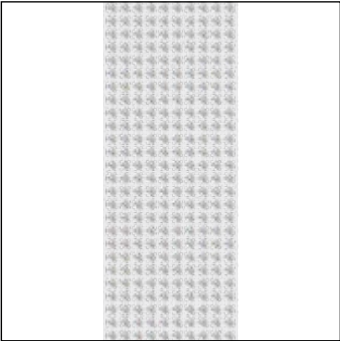
Ideal for jewelry, fashion accessories, and interior design, Crystaltex Chaton Bandings offer endless artistic freedom. Their versatile design and luminous radiance make them a brilliant choice to add a touch of individuality to any piece.

Crystaltex Chaton Bandings

- Crystaltex Chaton Bandings
- Application: Hotfix or IT (Self-Adhesive)
- Foil Colors: Transparent, Black
- Special Features Available: n.a.
- Segments: Accessories, Apparel, Jewelry, Interior Design

ARTICLE EXPLANATION

62 030



R	002-010, 088
SS	PP 9 (1028)
M	5 M ¹ 100%

62 030	R	SS	M	100 %
Article number	This article is available in 2-10 and 88 rows.	Stone size	Minimum order quantity in meters (M)	% of actual size

ORDERING EXAMPLE & PRODUCT VARIETY EXPLANATION

62 030	010	S	010	001
Article number	3-digit code for number of rows	Type of base material	Color of base material	Color of crystals
		S Hotfix I IT (Self-Adhesive)	010 Transparent 012 Black	Please see the respective product matrix for all available reference codes.

¹ Please note: the 5-meter packing unit can be delivered in batches (max. three parts with a minimum length of 0.5 meters in each batch).

62 030

		Rows	2 rows	3 rows	4 rows	5 rows	6 rows	7 rows	8 rows	9 rows	10 rows	88 rows	Color of Film	010 Transparent (S_Hoflix, _LIT)	012 Black (S_Hoflix, _LIT)
Crystal	Crystal (001)														
Colors															
Plain Colors															
Black Diamond (215)															
Greige (284)															
Jet (280)															
Light Colorado Topaz (246)															
Light Siam (227)															
Rose (209)															
Silk (391)															
Tanzanite (539)															
Crystal Effects															
Transparent Effects															
Crystal Aurore Boreale (001 AB)															
Crystal Golden Shadow (001 GSHA)															
Crystal Silver Night (001 SINI)															
Crystal Silver Shade (001 SSHA)															
Color Effects															
Metallic Effects															
Jet Hematite (280 HEM)															

Crystaltex Chaton Bandings

62 031 (Honeycomb)

		Rows		3 rows	4 rows	5 rows	6 rows	10 rows	Color of Film	010 Transparent (S_Hoflix, L_IT)	012 Black (S_Hoflix, L_IT)
Crystal											
Crystal (001)											
Colors											
Plain Colors											
Black Diamond (215)											
Greige (284)											
Jet (280)											
Light Colorado Topaz (246)											
Light Siam (227)											
Rose (209)											
Silk (391)											
Tanzanite (539)											
Crystal Effects											
Transparent Effects											
Crystal Aurore Boreale (001 AB)											
Crystal Golden Shadow (001 GSHA)											
Crystal Silver Night (001 SINI)											
Crystal Silver Shade (001 SSHA)											
Color Effects											
Metallic Effects											
Jet Hematite (280 HEM)											

Additional Features

Swarovski offers three innovative technologies that can be paired with products from the Crystal Textures assortment, enabling designers to create bold, personalized, and technically advanced crystal-embellished designs.

Graphic products allow imagination to take shape through high-definition printed motifs: from logos to lifelike images, any visual can be seamlessly integrated into designs. Utilizing three distinct printing methods – Foil Print, Glass Print, or a combination of both – each creation can achieve a sparkling 3D effect.

Unlimited Technology elevates precision and refinement to a new level, enabling sharper edges, seamless integration, and a luxurious finish – all while saving time by eliminating the need for rework.

Foil Overlay Technology expands creative possibilities, enabling motifs to be applied to challenging materials such as leather, and ensuring smooth, flexible integration into standard production processes.

Graphic - The Limitless Crystal Printing Technology

- Products: Crystal Fabric Motifs, Crystal Rocks Family, Crystal Intarsia (only Foil Print)
- Application: Hotfix, Coldfix, IT (Self-Adhesive), and Removable Foil (only Foil Print)
- Foil Colors: Transparent, Black, White
- Special Feature Combination: Foil Overlay, Unlimited
- Segments: Accessories, Apparel, Footwear, Jewelry, Interior Design, Packaging

GRAPHIC OFFERS THREE BRILLIANT PRINTING TECHNIQUES FOR LIMITLESS CREATIVE POWER:



Foil Print (FP)

Printed directly on the foil, underneath the crystals.

Foil Print allows for optimal brilliance. It is recommended for simple motifs and prints where blurred contours are a design element.

Please note the Print Centricity Tolerance for Foil Print is up to 0.50 mm.



Glass Print (GP)

Printed directly onto the crystals, on the surface.

Glass Print ensures an incredibly precise reproduction of the desired motif, with a soft, matte effect. It is recommended for complex motifs and prints.

Please note the Print Centricity Tolerance for Glass Print is up to 2.00 mm.



Combination of Foil & Glass Print (FP&GP)

Printed onto both foil and crystals.

This unique printing technique ensures complete customization and design innovation, with stunning depth of detail.

When overlapped, prints merge to create an illusion of vibrant 3D texture.

ARTICLE EXPLANATION

Graphic Fabric

57 439



C	FP30443 022 001M500
S	~54x46
M	85 PCS 52%

57 439	C	S	M
Article number	Color assortment FP Foil print GP Glass print	Motif size in mm	Minimum order quantity in pieces (PCS)

10

ORDERING EXAMPLE & PRODUCT VARIETY EXPLANATION

57 439	FP30443	022		001M500	XS
Article number	Print technique FP Foil Print GP Glass Print FP & GP Foil Print & Glass Print	Type of base material 022 White 012 Black 010 Transparent	Color of film C Hotfix I Coldfix R IT (Self-Adhesive) Removable foil	Color of crystals Please see the respective product matrix for all available reference codes.	Extra Small

OVERVIEW OF ALL AVAILABLE COLORS AND EFFECTS

Graphic Fabric and Graphic Crystal Intarsia

57 439, 84 037 Customized Motif Number		Color of Film	010 Transparent (HF; CF; IT; RM)	012 Black (HF; CF; IT)	022 White (HF; CF; IT)	Print	Print on Foil ¹	Print on Glass ²
Crystal Effects								
Transparent Effects								
Crystal Aurore Boreale (001 AB)								
Crystal Golden Shadow (001 GSHA)								
Metallic Effects								
Crystal Comet Argent Light (001 CAL)								
Color Effects								
Metallic Effects								
Jet Hematite (280 HEM)								
Multicolors								
Crystal & Crystal Moonlight (001 M500)								

Graphic Rocks, Fine Rocks and Ultrafine Rocks

718 266, 74 113, 89 968 Customized Motif Number		Color of Film	010 Transparent (HF; CF; IT; RM)	012 Black (HF; CF; IT)	022 White (HF; CF; IT)	Print	Print on Foil ¹	Print on Glass
Crystal								
Crystal (001)								
Colors								
Plain Colors								
Jet (280)								
Crystal Effects								
Transparent Effects								
Crystal Aurore Boreale (001 AB)								
Crystal Golden Shadow (001 GSHA)								
Crystal Moonlight (001 MOL)								
Crystal Silver Shade (001 SSHA)								
Metallic Effects								
Crystal Comet Argent Light (001 CAL)								
Multicolors								
Crystal & Crystal Moonlight (001 M126)								

¹ Print on Foil will not be visible on covering colors/effects and therefore this variation will not be offered in combination with covering colors/effects. Only if "Print on Foil" is possible will a combination of both (Print on Foil & Print on Glass) be offered.

² Print on Glass is not available for Crystal Intarsia.

INSPIRATIONAL MOTIFS

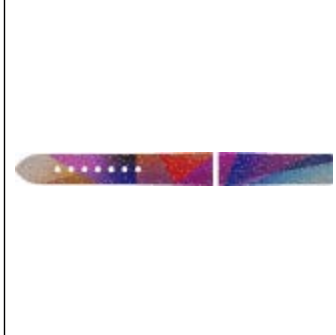
Graphic Fabric

57 435



C FP27196 GP27197 022 001M500
S ~104x127
M 16 PCS **33%**

57 438



C FP30437 022 001M500
S ~167x17
M 60 PCS **33%**

57 439



C FP30443 022 001M500
S ~54x46
M 85 PCS **52%**

630 707



C FP29681 022 001GSHA
S ~104x127
M 16 PCS **33%**

630 707



C GP29684 010 001CAL
S ~104x127
M 16 PCS **33%**

630 707



C FP29682 022 001M500
S ~104x127
M 16 PCS **33%**

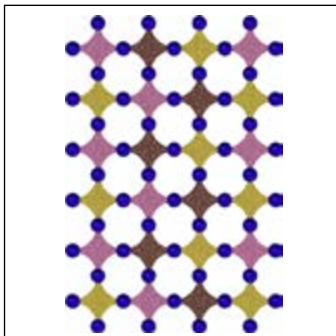
Graphic Crystal Intarsia

84 037



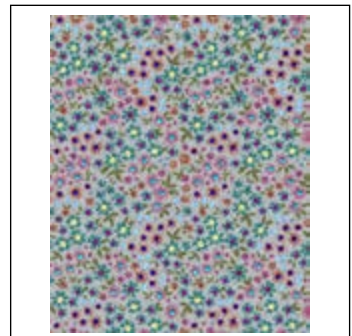
C FP24894 022 001M500 202 227
 208 001
E S6/S6/S6/S6
S ~96x96
M 9 PCS **33%**

84 060



C FP30434 010 001M500 296
E S34
S ~122x179
M 4 PCS **33%**

84 061



C FP30442 022 001M500 502 296
 202 263 213
E S6/S6/S8/S8/S10
S ~104x127
M 9 PCS **33%**

84 062



C	FP30441 022 001M500 261 001GSHA 223 209 223 001GSHA 209 227 261
E	S12/S12/S12/S16/S16/S20/ S20/S20/S34
S	~80x27
M	36 PCS 35%

412 053



C	FP29044OP 010 001M500 296 001METSH 206 205 209 276
E	S6/S8/S10/S12/S16/S20
S	~104x127
M	9 PCS 33%

412 058



C	FP29049OP 010 001M500 213 214 360
E	S6/S8/S10
S	~104x127
M	9 PCS 33%

Graphic Crystal Rocks Family

718 266



C	GP29726 012 280
S	~104x127
M	9 PCS 33%

74 113



C	GP30436 010 001CAL
S	~104x127
M	9 PCS 33%

74 114



C	GP30435 010 001CAL
S	~51x63
M	30 PCS 45%

74 115



C	FP30438 022 001M126
S	~148x210
M	2 PCS 33%

89 968



C	FP30439 GP30440 022 001M126
S	~148x210
M	2 PCS 33%

89 969

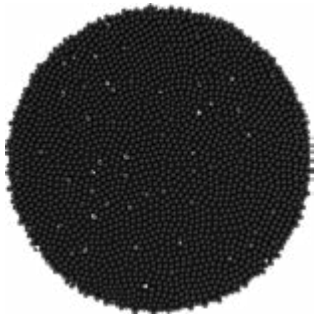


C	FP30444 022 001M126
S	~115x35
M	21 PCS 33%

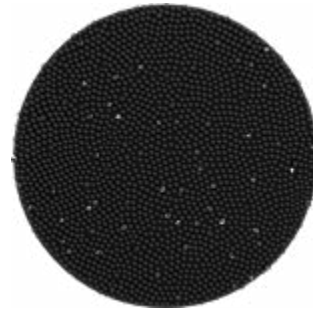
Unlimited Technology

- Products: Crystal Fabric Motifs, Crystal Intarsia
- Application: Hotfix, Coldfix, IT (Self-Adhesive)
- Foil Colors: Transparent, Black
- Special Feature Combination: Graphics, Foil Overlay
- Segments: Accessories, Apparel, Footwear, Jewelry, Interior Design, Packaging

Standard Crystal Fabric

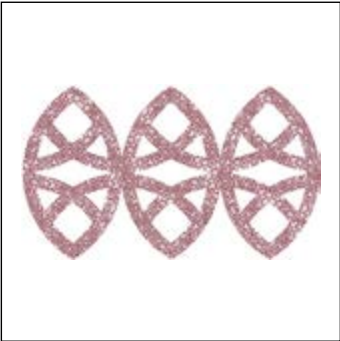


Crystal Fabric Unlimited (UL)



Crystal Fabric Unlimited (UL)

57 411



C	010-001ANTP UL
S	~72x42
M	72 PCS
	55%

57 411	C	S	M	55%
Article number	Color of crystals	Motif size in mm	Minimum order quantity in pieces (PCS)	% of actual size

Ordering Example & Product Variety Explanation

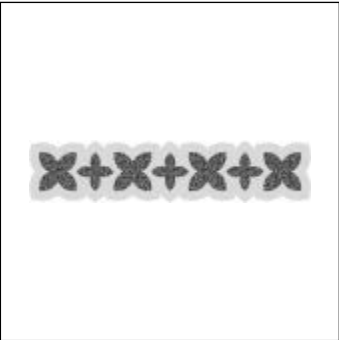
57 411		010	001 ANTP	UL
Article number	Type of base material	Color of film	Color of crystals	Unlimited
	Hotfix	010 Transparent	Please see the relevant product matrix for all available reference codes.	
C	Coldfix	012 Black		
I	IT (Self-Adhesive)			

Foil Overlay Technology

- Products: Crystal Fabric Motifs, Crystal Rocks Family, Crystal Intarsia
- Application: Hotfix
- Foil Colors: Transparent, Black
- Special Feature Combination: Graphics, Unlimited
- Segments: Accessories, Apparel, Footwear, Jewelry
- Please be aware that min. motif size for Crystal Rocks Family with FO is 15x15 mm or effective surface of 2.25 cm².

ARTICLE EXPLANATION

57 396



C	012-001 CAL FO
S	~149x32
M	18 PCS 25%

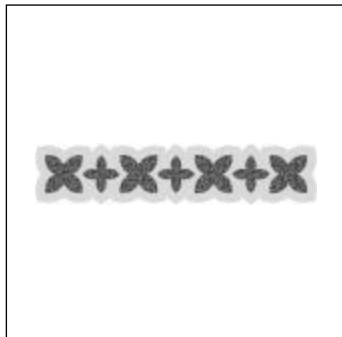
57 396	C	S	M	25%
Article number	Color of crystals	Motif size in mm	Minimum order quantity in pieces (PCS)	% of actual size

Ordering Example & Product Variety Explanation

57 396		012	001 CAL	FO
Article number	Type of base material	Color of film	Color of crystals	Foil Overlay
	Hotfix	010 Transparent 012 Black	Please see the respective product matrix for all available reference codes.	

INSPIRATIONAL MOTIFS

57 396



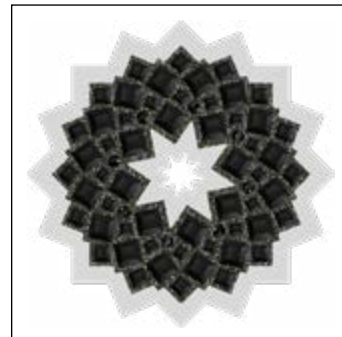
C 012-001CAL FO
S ~149x32
M 18 PCS **25%**

57 399



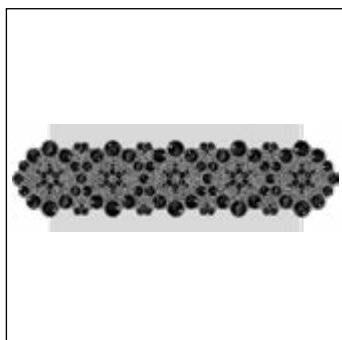
C 012-280HEM FO
S ~55x50
M 30 PCS **75%**

412702



C 012-001MIGLD/280/280/
 280/280 FO
E S12/2400MM6/2400MM3/
 2400MM4
S ~74x74
M 20 PCS **55%**

412772



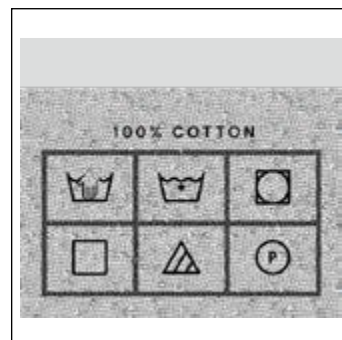
C 012-001CAL/280/280/280/280/
 280 FO
E S6/S12/S20/S30/S34
S ~154x50
M 12 PCS **28%**

412773



C 010-001GSHA/001SINI/001SINI/
 001SINI/001SINI FO
E S6/S12/S16/S20
S ~274x75
M 4 PCS **15%**

631092



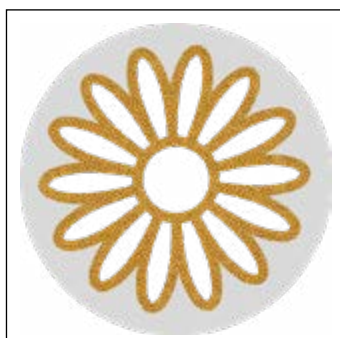
C GP30315OP 022 001M500 FO
S ~51x45
M 36 PCS **55%**

718104



C 010-319M158 FO
S ~29x28
M 99 PCS **100%**

719595



C 010-292 FO
S ~125x125
M 6 PCS **33%**

832668



C FP30313 GP30314OP 022
 001M126 FO
S ~50x65
M 25 PCS **42%**

Please note: All motifs are available in certain color/film variations (see color matrix).

Special Motif Service

Special Motif Service

A special motif is a design created by the customer that differs to the Inspirational Collection. This service opens an abundance of customization possibilities and enables you to profit from Swarovski’s long-standing experience and design expertise. A range of customization options for existing motifs is available (see “Customization Possibilities”

Ordering Process

Send your request with the drawing you wish to order to your nearest Swarovski sales office. Make sure you include all measurements for the desired motif. Please also indicate which product group your special motif applies to (Crystal Fabrics, Crystal Rocks Family or Crystal Intarsia). You will then receive a quotation including your article number,

below). You can also submit design sketches that meet your special needs, such as a brand image or an image to suit a particular sales campaign. This will then be made up according to your specifications using Computer Aided Design, which means that adjustments can be made easily according to your needs.

Drawing Format

Please always submit the drawing of your desired motif to represent it in the actual size you require. A small sketch, when enlarged to the desired size, will have blurred lines that will make it difficult to correctly reproduce. Pictures or drawings representing 100% size of the design or very good quality scans in JPG, BMP, or DXF format will ensure that

minimum order quantity, price, and the line drawing of your special motif in PDF format. Please contact your Swarovski sales office again if any changes need to be made. Your special motif will be produced and delivered following your confirmation.

we have clear data to work with. These can also be sent via email. If sending a sewing pattern, please include the whole pattern and not just sections. When the sketch is submitted as a copy by email, please include a scale legend (e.g. copy/scan with a ruler next to the drawing). This will ensure that the desired size of the motif can be identified.

Required information for Graphic Motifs

data format contour/outline	vector graphics (.dxf, .ai, .eps, .dwg)
data format picture	raster image format (.tiff, .pdf, .psd, .png) / vector format (.ai, .eps, .pdf)
picture resolution & size	min. 300dpi (real size)
colors	RGB or CMYK
fonts	convert text to paths/outlines

Product Tolerances

It is generally possible to draw motifs with a minimum gap between the outlines. However, due to the tolerance level of the crystals being applied onto carrier film, the final Crystal Textures motifs may differ from the sketches or prints in relation to the motifs’ outline.

Therefore, the motif, and by extension, the product itself, may be subject to individual variations with each reproduction. These variations are caused by technical production related factors. As these variations are not deemed to be defects, warranty claims are excluded and

Swarovski assumes no liability whatsoever in connection with them.

Please note that for the Graphics feature, due to the different print methods (print on foil or glass), the colors may vary. Possible color variations are more noticeable on single-color motifs than on images with many different colors.

You can find the details of all product tolerances in the Product Information Sheets.

Terms & Conditions

Special productions are generally offered to all our customers if these are deemed to be feasible and comply with our General Terms and Conditions. Please note special

productions are subject to acceptance by Swarovski and ordering a design does not automatically grant exclusive production of this design for the customer.

Product Application

If detailed information on the possible motif tolerances (e.g., cavity production for metal parts) and print tolerances (e.g., offset or color tolerance) is required, please contact your local Swarovski sales office who will enter an application request into our application database.

For detailed application information, please refer to the Application Manual or contact your Swarovski sales office. Please take care with deep-colored fabrics and artificial leather (e.g., denim and alcantara). Some fabrics may bleed after application or washing.

Customization Possibilities of the respective product groups

	CRYSTAL FABRIC MOTIFS	CRYSTAL ULTRAFINE ROCKS	CRYSTAL FINE ROCKS	CRYSTAL ROCKS	CRYSTAL INTARSIA
Min. motif size	(10x10 mm) or 1.0 cm ²	(8x8 mm) or 0.64 cm ²	(10x10 mm) or 1.00 cm ²	(15x15 mm) or 2.25 cm ²	(10x10 mm) or 1.0 cm ²
Max. motif size	980x330 mm Standard 400x330 mm (Graphics, UL, FO)				
Min. product width	3 mm	3.4 mm	4 mm	9 mm	3 mm
Min. width of holes within motif	3 mm				
Min. distance between 2 motifs	3 mm				
Rounding Radius (edges & angles less than =/< 90° need to be rounded off)	0.75 mm	1 mm	1.35 mm	1.5 mm	0.75 mm
Max. amount of different colors/ sizes of Crystals	1 Crystal Fabric Mixture Color + 1 Carrier Foil Color	1 Crystal Ultrafine Rocks Color + 1 Carrier Foil Color	1 Crystal Fine Rocks Color + 1 Carrier Foil Color	1 Crystal Rocks Color + 1 Carrier Foil Color	9 different Flat- back elements + 1 Crystal Fabric Mixture Color + 1 Carrier Foil Color
Min. motif size for Foil Overlay Feature	(10x10 mm) or 1.0 cm ²	(15x15 mm) or 2.25 cm ²	(15x15 mm) or 2.25 cm ²	(15x15 mm) or 2.25 cm ²	(10x10 mm) or 1.0 cm ²
Foil Overlay min./max. width outside	min. 3 mm / max. 50 mm				
Foil Overlay inside (between crystal- covered surfaces)	min. 3 mm / max. 50mm				
Foil Overlay Minimum surface	0.3 cm ² (3x10 mm)	0.45 cm ² (3x15 mm)	0.45 cm ² (3x15 mm)	0.45 cm ² (3x15 mm)	0.3 cm ² (3x10 mm)
Foil Overlay outer contour	without restriction / however: corners ≤ 90° must be rounded with 1 mm				
Tolerances - outer contour	+ 2.2 mm	+/- 0.4 mm	+/- 0.6 mm	+/- 0.8 mm	+ 2.2 mm
Product Height	1.00 mm +/- 0.30 mm	1.40 mm +/- 0.20 mm	1.85 mm +/- 0.25 mm	2.40 mm +/- 0.30 mm	Fabric: 1.00 mm +/-0.30 mm 2038 SS6: 0.65 mm + up to 0.30 mm 2078 SS34: 2.50 mm + up to 0.30 mm